



DELTA
LIFE SCIENCE

CARLA CAMP

25th of November 2024
Bart de Boer, CTO

History

Spin-off from TNO (2018)

TNO innovation
for life



Offices

Erasmus MC incubator
Rotterdam Science
Tower

High Tech Factory
Enschede



A laboratory setting with a grid of petri dishes and a pipette dispensing liquid into one of them. The image is overlaid with a blue gradient and a dark blue triangle on the right side.

Improving healthcare

**Faster development of
drugs and diagnostic tests**

Current biosensing instruments are **slow & expensive.**



DELTA
LIFE SCIENCE



Photonic Integrated Circuits.

Accelerating life-science research



DELTA
LIFE SCIENCE

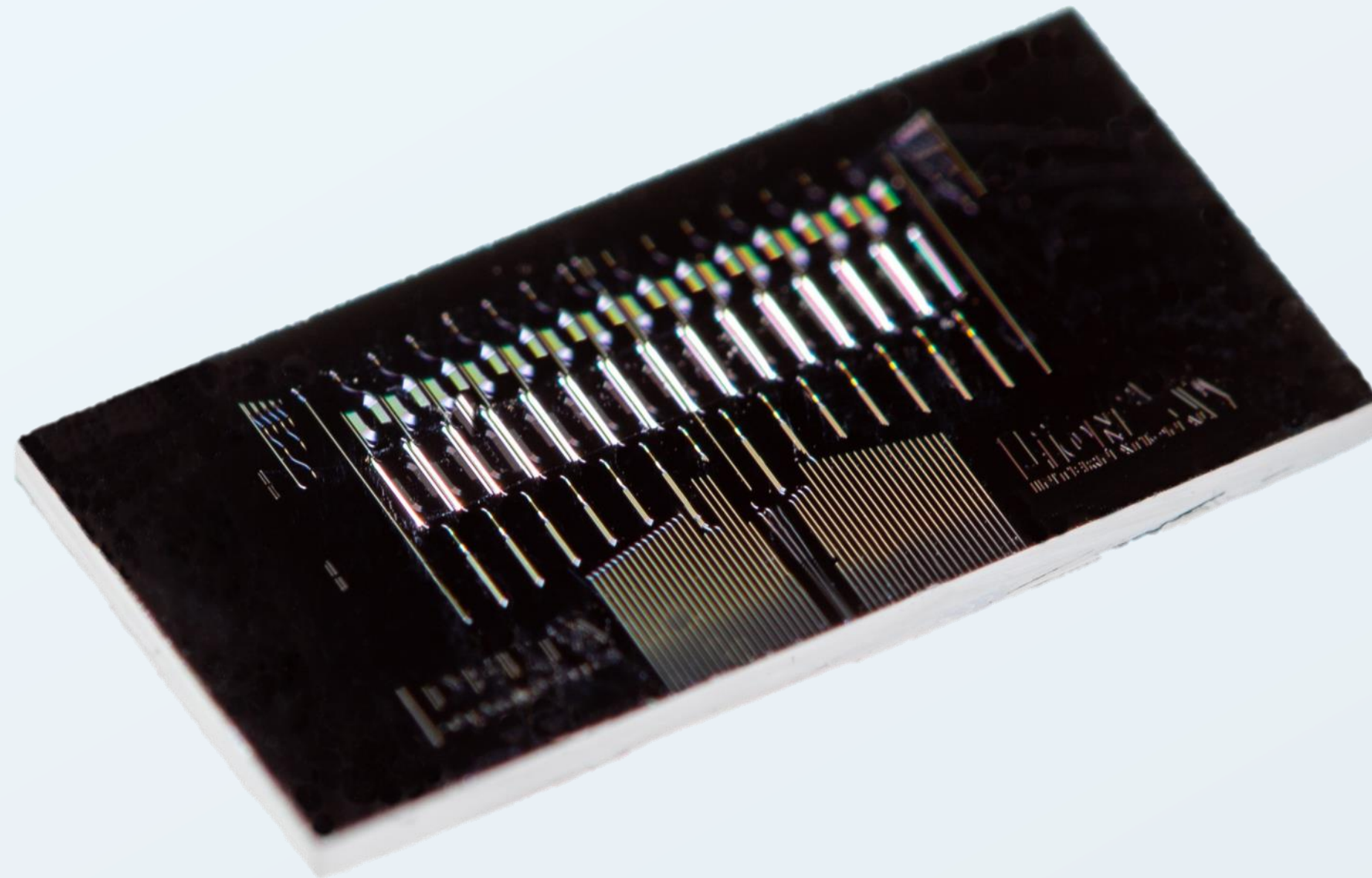
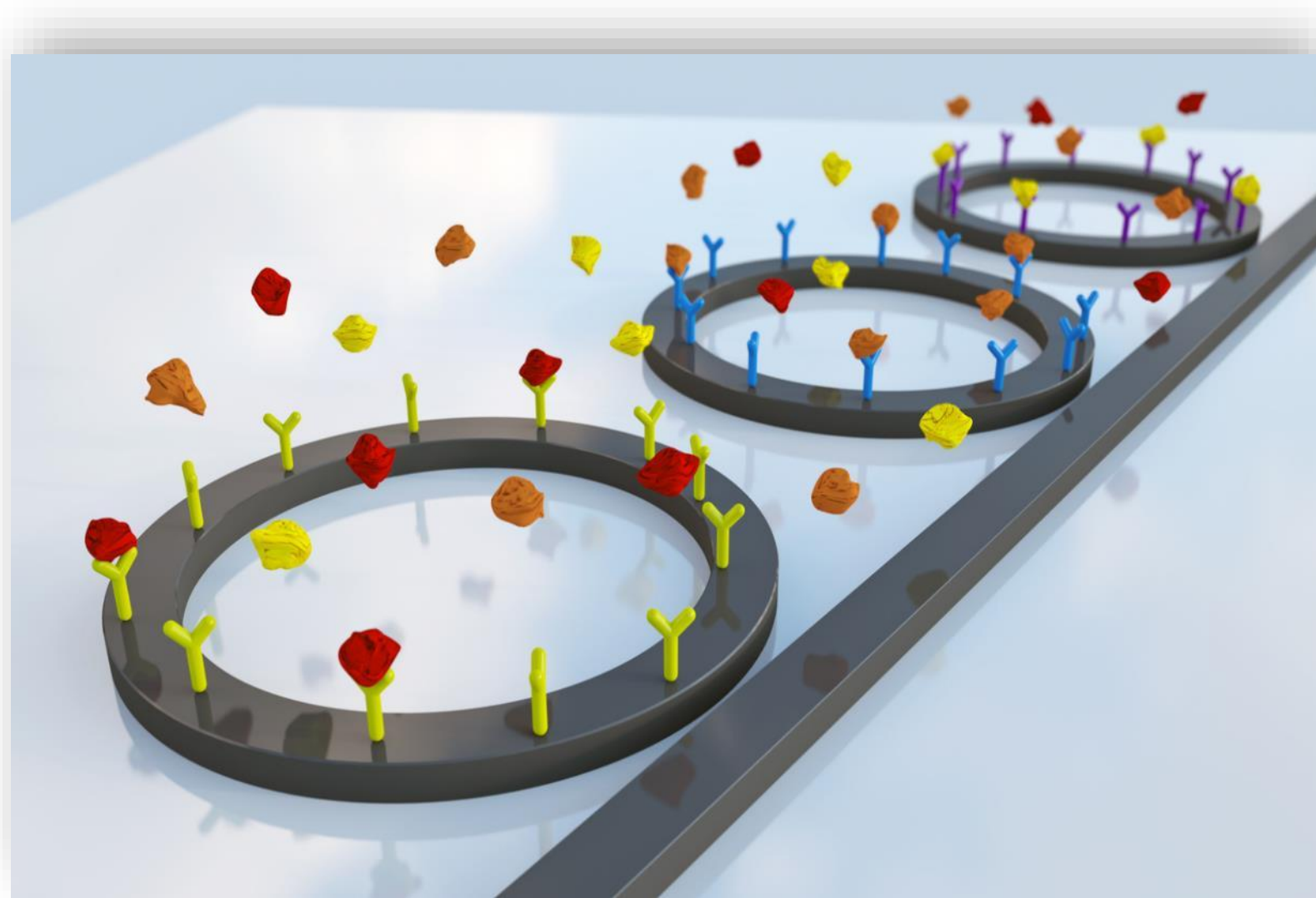


Image: Optical chip Delta Life Science

The merits. Of photonic biosensors.



Impression: Biosensor

- ✓ Label-free
- ✓ Multiplexed
- ✓ Affordable

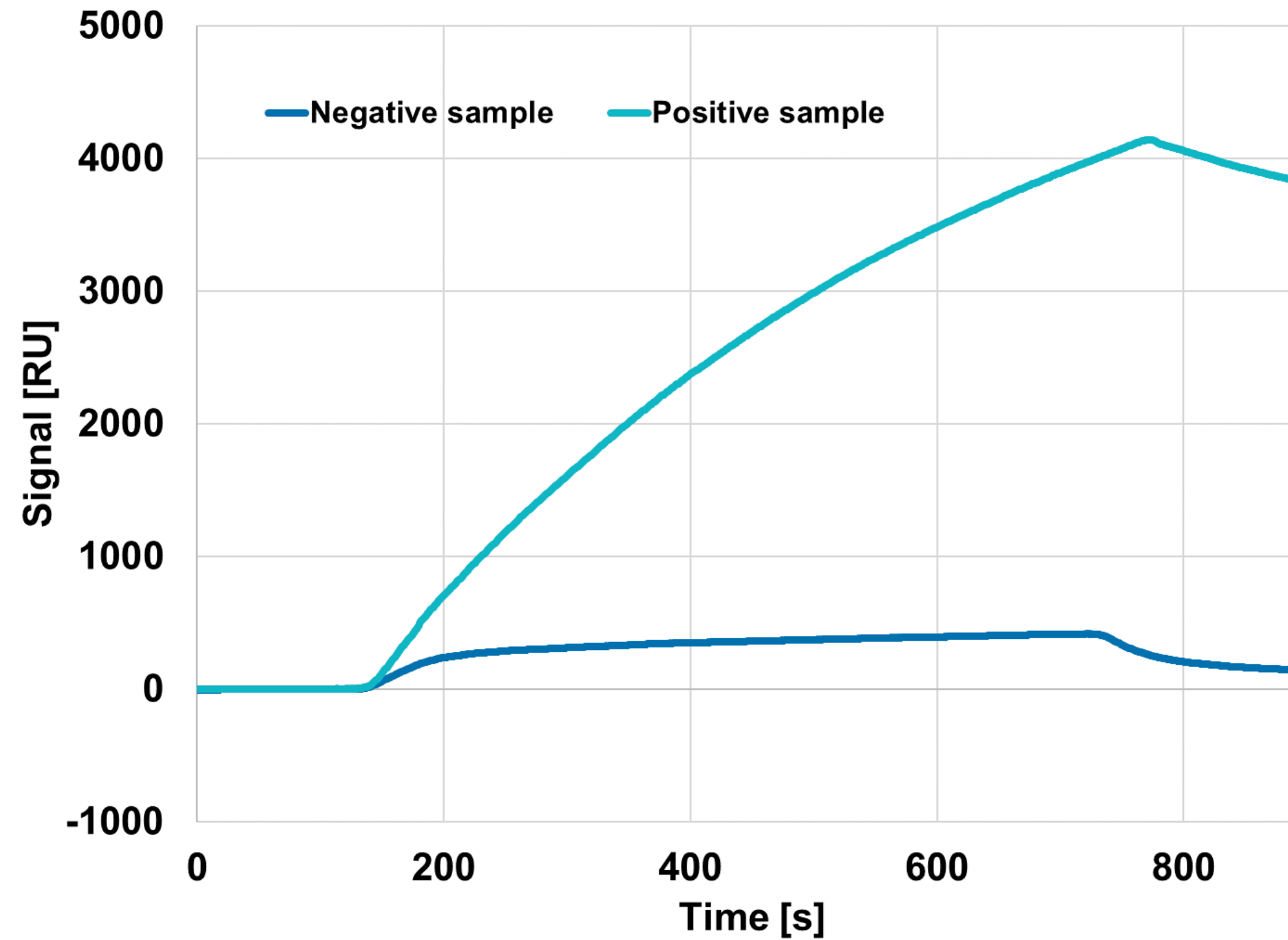


DELTA
LIFE SCIENCE

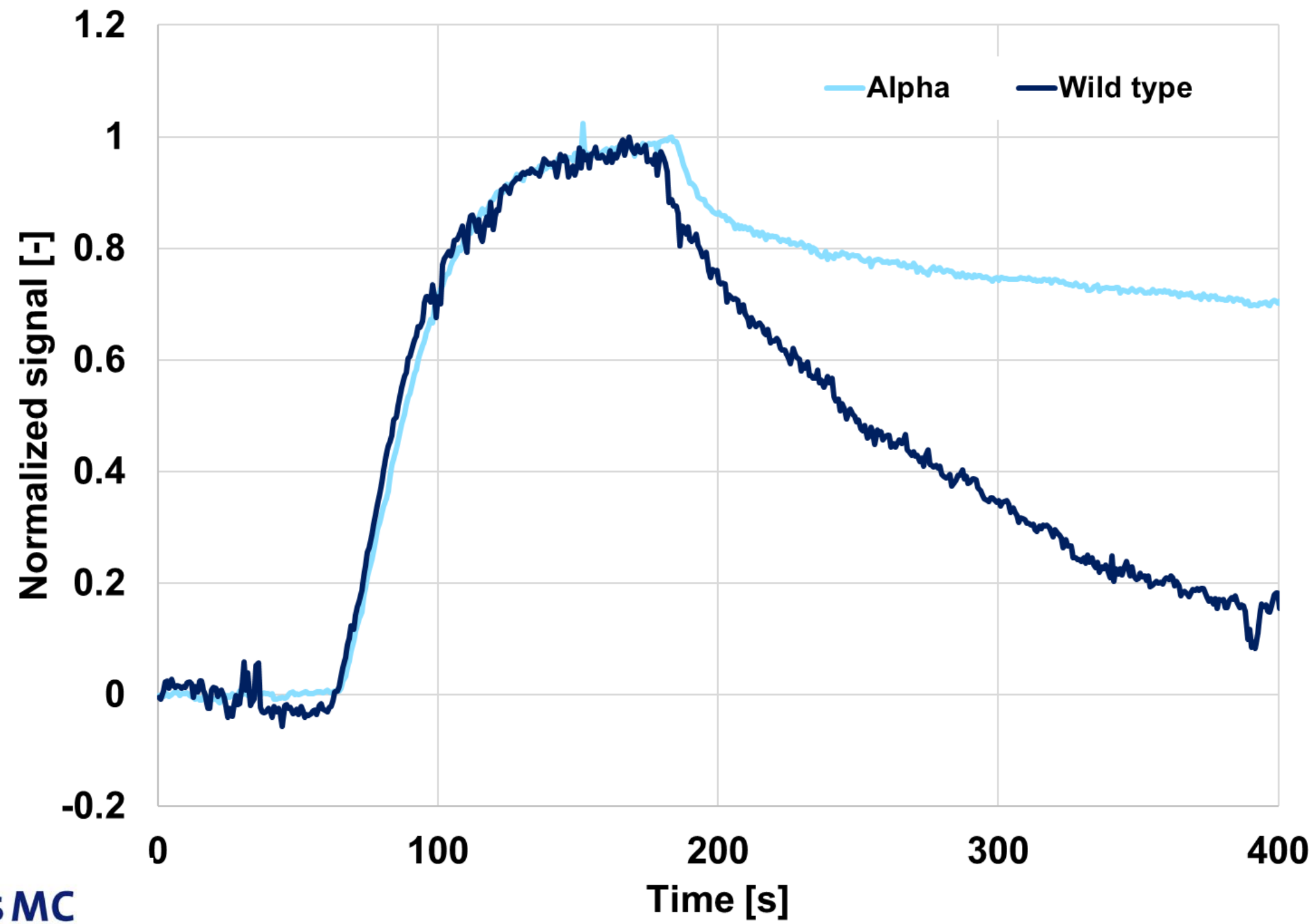
inQuiQ



Diagnostics. Autoimmune biomarker.



Kinetics. Corona Variants



A Harbour BioMed Company

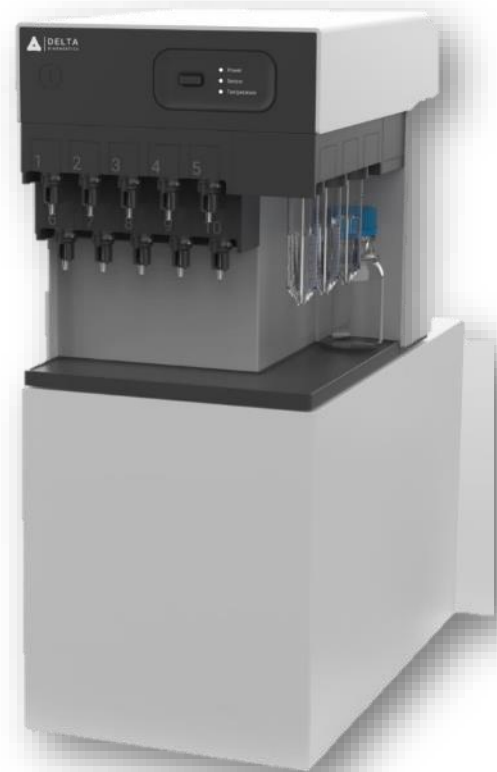


Product Roadmap

inQuiQ



inQuiQ768



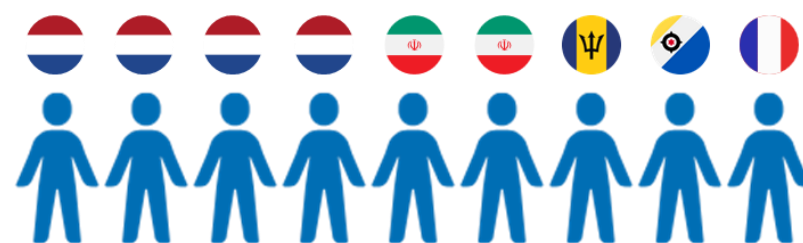
inQuiQ UHT



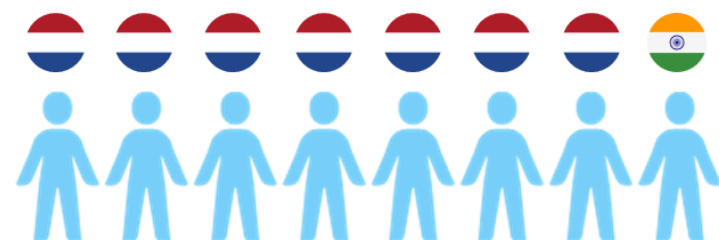
The Team



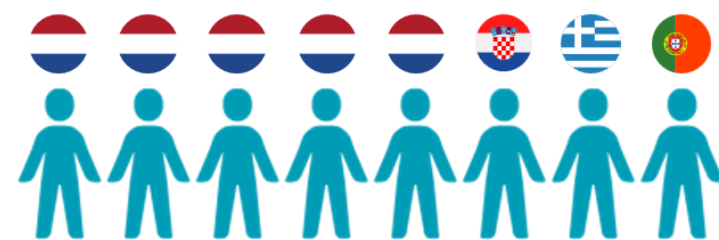
PhD



MSc



BSc



33 Team member + 15 Nationalities



A presence. In East and West.

Rotterdam

- Headquarters
- Prototyping
- Sales
- Wet lab facilities



Enschede

- Software Development
- Production partners

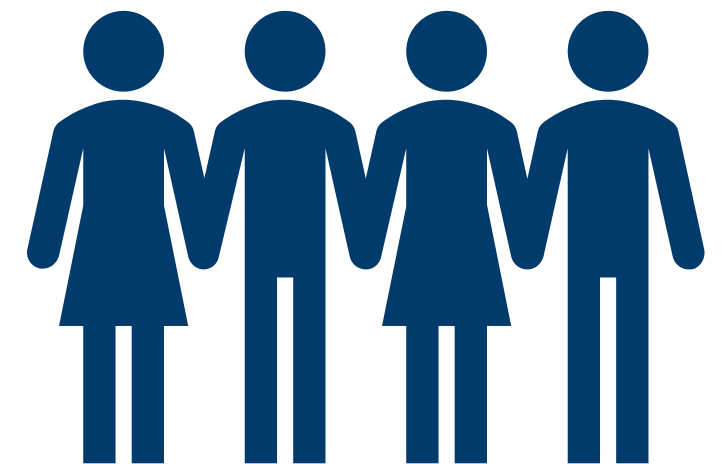


Join our Team



- Vacancies
 - Software engineering
- Internships
- Open applications
- Disciplines
 - Assay Development
 - Optics
 - Integrated Photonics
 - Mechanics
 - Micro-fluidics
 - Electrical Engineering
 - Software Engineering

W deltalifescience.nl
E careers@deltalifescience.nl



Contact

T +31 10 703 89 82

E careers@deltalifescience.nl

W deltalifescience.nl

Follow us on LinkedIn

